

Vianeta Mobile Physician Desktop 4.5 Quick Start Guide

Introduction

The Vianeta Mobile Physician Desktop 4.5 Quick Start Guide is designed to get you up and running quickly with Vianeta Mobile Physician Desktop.

Prerequisites

You'll need:

1. Olympus DS-3000/Olympus DS-330 and DSS Player software
2. Philips SpeechMike and SpeechMike Executive software
3. Vianeta Mobile Physician Desktop Installer

Install Vianeta Mobile Physician Desktop

1. Double-click on Setup.exe. The installation program will begin.
2. Click **Next**.
3. Read the license agreement. Click **Yes** to agree to the terms and continue the installation. Click **No** to cancel the installation.
4. Choose a Destination Location and click **Next**.
5. Select a Program Folder and click **Next**.
6. Enter your license key (see your Vianeta representative or Service Provider).
7. Click **Next**. The installation program will finish installing Vianeta Mobile Physician Desktop.
8. Click **Finish**.

Olympus System Requirements

For Olympus devices, the system requirements are:

- Windows 2000, XP
- IE 6 or higher
- USB Port
- Internet Connection
- Olympus Software
- USB cable and/or USB Docking station

Install and Configure Olympus DSS Player

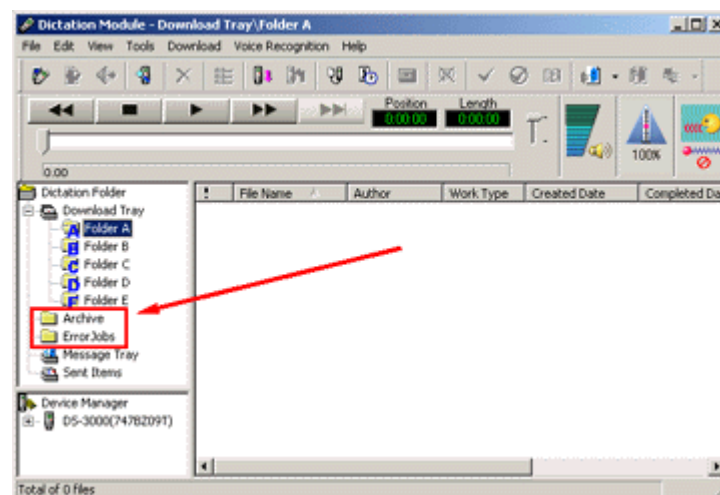
1. Place the Olympus DSS Player Software CD in the CD drive of the computer. The installation software should run automatically. If not, consult the Olympus documentation that accompanies the device.

2. Select Install English (US) Version.
3. Follow the prompts as they are displayed, accepting the default where possible. Check the box to install Acrobat Reader if it is not already installed on the computer.
4. Click **Finish**.
5. Once the software is installed, attach the USB cable to the computer and plug in the Olympus DS-3000 or attach the USB cradle and plug in the Olympus DS-330.
6. The computer should now recognize and install the device.
7. Configure the Olympus DSS Player software for your device, as per the instructions below.

Note: The configuration instructions below are vital to the proper functioning of the Vianeta Mobile Physician Desktop.

Configure DSS Player for Olympus DS-3000

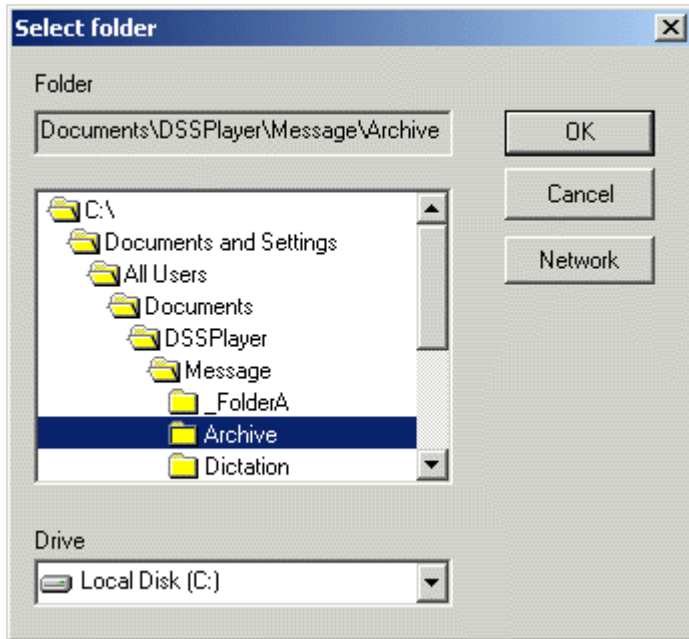
1. Launch the DSS Player software by plugging in the Olympus DS-3000 or through **Start > Programs > Olympus DSS Player Pro > Dictation Module**.
2. Verify that the folder listing shows the Archive and ErrorJobs folders:



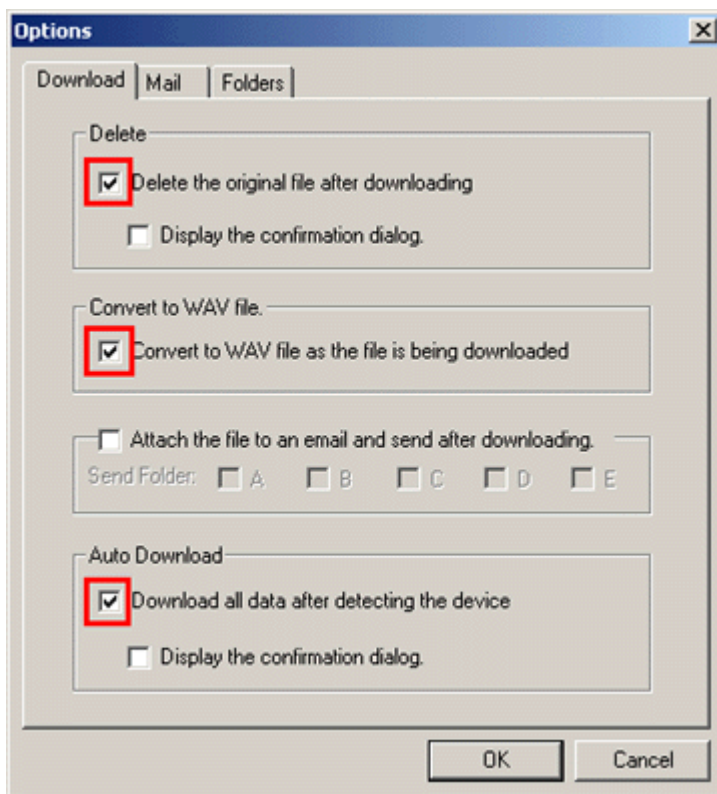
3. If the Archive and ErrorJobs folders are not present, right-click on **Dictation Folder** and select **Add Folder**.

Vianeta Mobile Physician Desktop 4.5 Quick Start Guide

Double-click on the **Archive** folder and then click **OK**. Repeat for **ErrorJobs**:



4. Select **Tools > Options** from the DSS Player.



5. Make sure that the **Convert to WAV file as the file is being downloaded** option is checked.
6. Vianeta recommends checking the **Delete the original file after downloading** and **Download all data after detecting the device** options as above.
7. From the **Choose File Types** pull-down, select **All Files**:

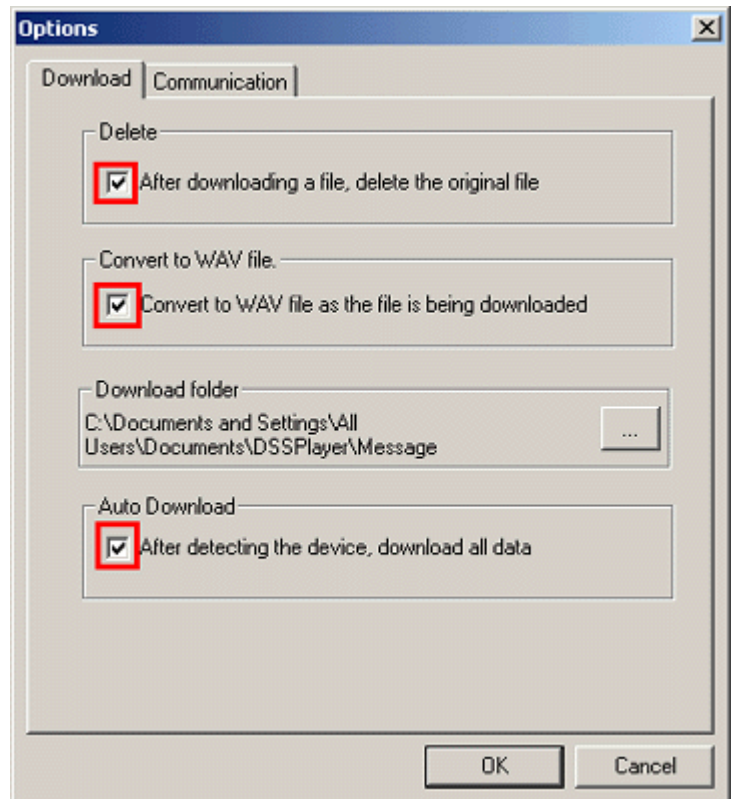


Note: You must select **All Files** in order to use the Vianeta Mobile Physician Desktop properly.

8. Configure the **Author ID** as explained in “Configuring AuthorID for Olympus DS-3000” on page 3.

Configure DSS Player for Olympus DS-330

1. Launch the DSS Player software by plugging in the Olympus DS-330 or through **Start > Programs > Olympus DSS Player 2002 > Olympus DSS Player 2002**.
2. Select **Tools > Options** from the DSS Player.



Vianeta Mobile Physician Desktop 4.5 Quick Start Guide

3. Make sure that the **Convert to WAV** file as the file is being downloaded, is checked.
4. Vianeta recommends checking the **After downloading a file, delete the original file** and **After detecting the device, download all data options** as above.
5. From the **Choose File Types** pull-down, select **All Files**:



Note: You must select **All Files** in order to use the Vianeta Mobile Physician Desktop properly.

6. Configure the Author ID as explained in “Configuring AuthorID for Olympus DS-330” on page 3.

Configuring AuthorID for Olympus DS-3000

For the Olympus DSS Player Pro software, the Author ID is displayed in the file listing, and is also available via right-clicking on the .dss file, selecting **Properties**, and then selecting the **Detail** tab.

1. See the instructions on page 42 of the DS-3000.pdf file (available via **Start > Programs > Olympus DSS Player Pro > DS-3000 Instructions**).

Configuring AuthorID for Olympus DS-330

For the Olympus DSS Player 2002 software, the Author ID is visible via right-clicking on the .dss file in the listing, selecting **Properties**, and then selecting the **Detail** tab.

1. Click the Transfer User ID icon in the DSS Player:



2. Enter the Author ID in the Transfer User ID dialog:



3. Click **Transfer**.

Downloading Dictations

1. Plug the device into the USB cable (Olympus DS-3000) or docking station/cradle (Olympus DS-330).
2. The DSS Player software is launched.
3. The dictation voice files are downloaded into **Folder A**.
4. At this point, the Physician can disconnect the device. The remaining process should be automatic.
5. The Vianeta Mobile Physician Desktop will attempt to upload the files into the Vianeta system.
6. Depending on the amount of dictations to upload and the Internet connection speed, it can take up to several minutes to upload all of the jobs.
7. When all of the files have been moved from **Folder A**, check the contents of the **ErrorJobs** folder.
8. Any jobs found in the **ErrorJobs** folder have not been uploaded. Please see “Troubleshooting” on page 36.
9. Successfully uploaded jobs are placed in the **Archives** folder.

Note: If multiple models of Olympus devices are installed on the same machine, you must ensure that the proper version of the Olympus DSS software is launched when a device is plugged in. To do this, right-click on the **Device Detector** icon in the system tray, choose **Select startup application**, and:

For Olympus DS-330 - choose DSS Player 2002

For Olympus DS-3000 - choose DSS Player Pro

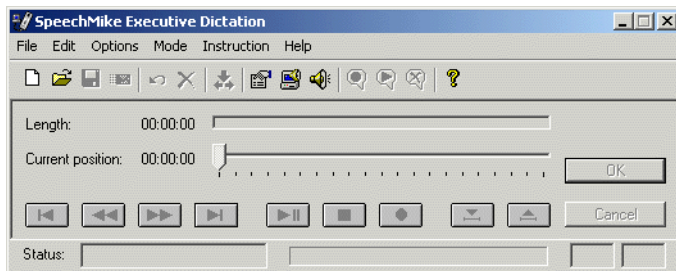
If the **Device Detector** is not running, consult the Olympus documentation for instructions on how to launch it.

Configuring Philips SpeechMike Executive

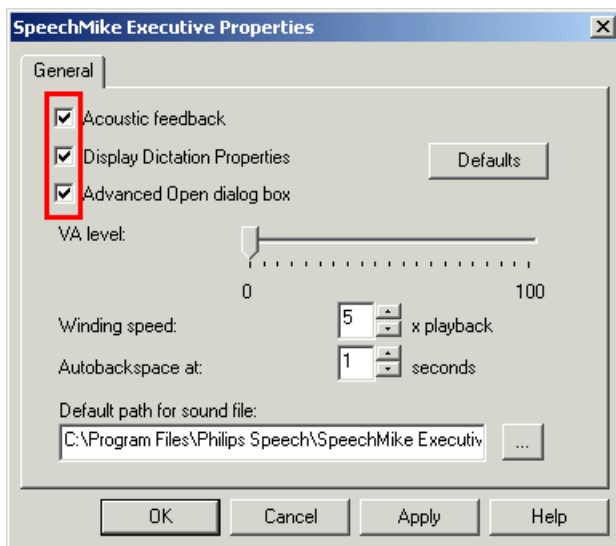
To configure the Philips SpeechMike Executive:

1. Launch the Philips SpeechMike Executive by selecting **Start > Programs > SpeechMike Executive > Dictation**. The Philips SpeechMike Executive Dictation dialog is shown:

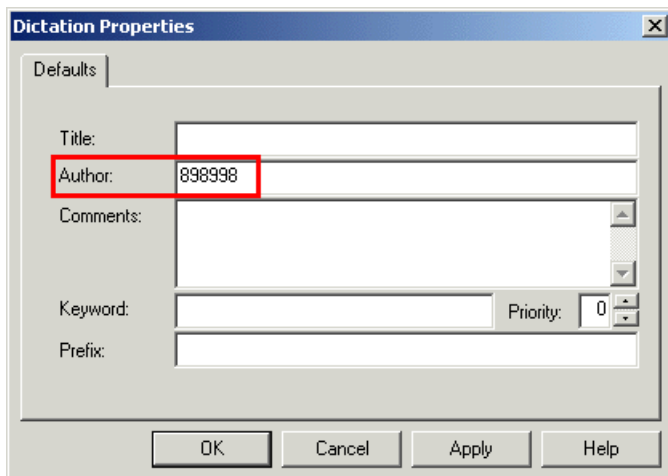
Vianeta Mobile Physician Desktop 4.5 Quick Start Guide



2. Select **Options > SpeechMike Executive Properties...** The SpeechMike Executive Properties dialog is displayed:



3. Make sure that the **Acoustic feedback**, **Display Dictation Properties**, and **Advanced Open dialog box** options are all checked. Click **OK**.
4. Click on Dictation Properties in the toolbar, or select **Options > Dictation Properties...** The Dictation Properties dialog is displayed:



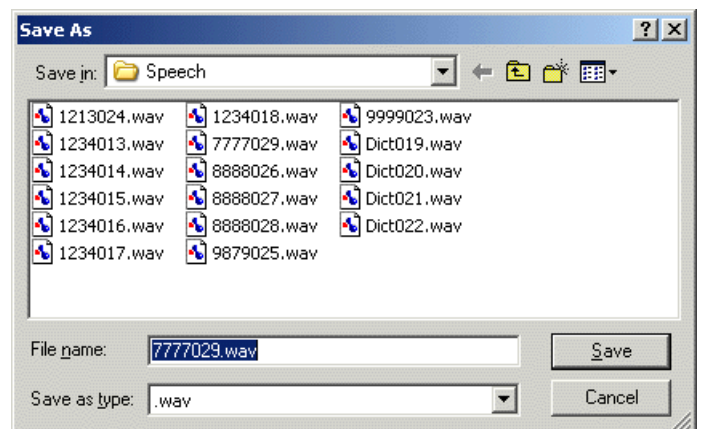
5. Set your Author ID (or Physician ID) by entering it in the Author field. Click **OK**.

Recording with the Philips SpeechMike

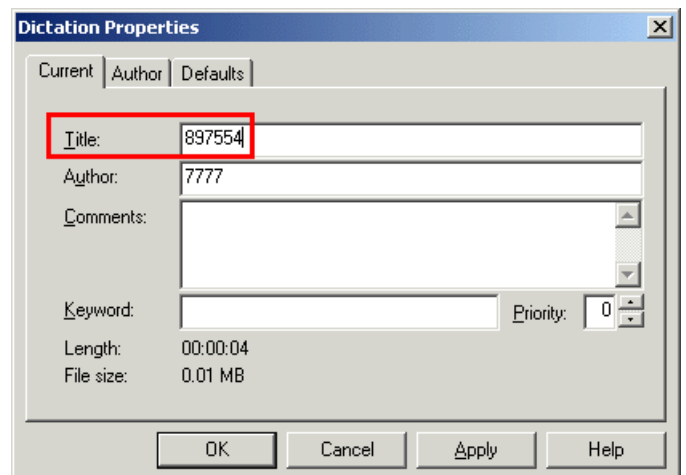
Note: If you are not familiar with the Philips SpeechMike, see “The Philips SpeechMike” on page 4.

To record:

1. Press the Record button on the Philips SpeechMike. This automatically puts you into pause mode. To start recording, press the Play/Pause button.
2. To end the dictation, press the CMD/EOL button. The **Save As** screen is displayed:



3. Press the CMD/EOL button again.
4. You will be asked to enter the Patient ID. Patient ID is entered in the Title field:



5. Click **OK**.


The Philips SpeechMike

The Philips SpeechMike has several buttons, lights, and mouse/trackball controls, and may also be configured with an optional barcode scanner.

Vianeta Mobile Physician Desktop 4.5 Quick Start Guide

PHILIPS SPEECHMIKE BUTTONS

The six main dictation-related buttons include:

	Button	Function
	A. CMD/EOL	Press to end a dictation.
	B. Record	Press to enter record mode.
	C. INS/OVWR	Toggles between Overwrite and Append when recording over an existing dictation.
	D. Fast Forward	Move forward through the dictation.
	E. Play/Pause	Toggles between pause and play when listening to a dictation.
	F. Rewind	Move backward through the dictation.

OTHER CONTROLS

The device also has a trackball and left and right mouse buttons as well as a microphone and an optional barcode scanner. There is also a left mouse “trigger” button on the underside of the device.